

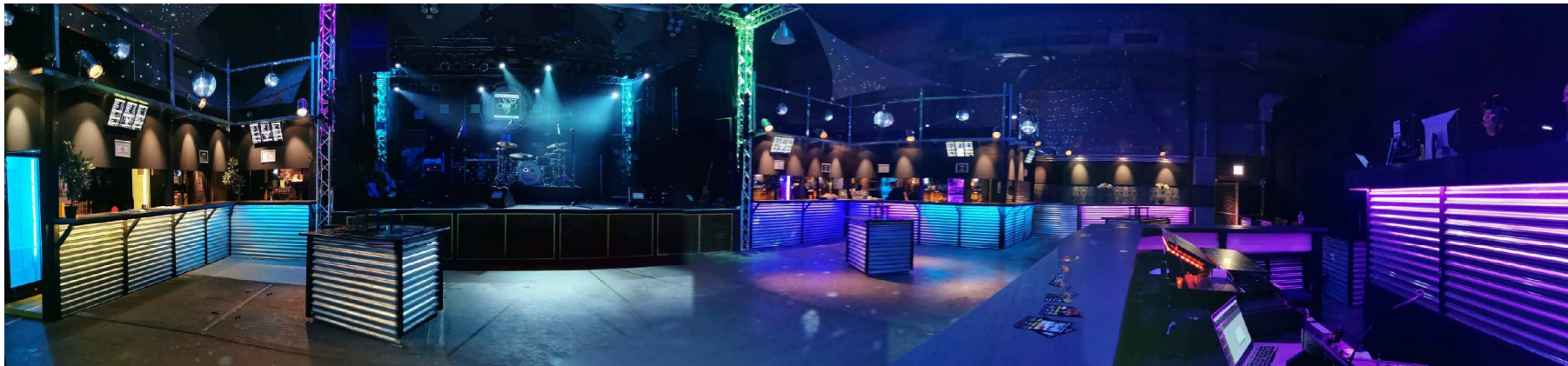
Event-Location

House
Party Sound



ROCK
CONCERTS

Areal Papierfabrik Biberist (SO)



Kontakt Location

Name	P9 Event-Location
Adresse	Fabrikstrasse 34
Ort	4562 Biberist
Telefon	+41 79 439 23 21
Mail	info@p-9.ch

Kontakt Technik

Firma	Mirage Event GmbH
Adresse	Grüttstrasse 50d
Ort	4562 Biberist
Telefon	+41 79 439 23 21
Mail	info@p-9.ch

Übersicht

Licht / Multimedia	Seite 2
Licht Plan	Seite 3
Licht DMX	Seite 4
Bilder	Seite 5

Licht / Multimedia

Licht Bühne

Steuerungen

- 1 Highlite Infinity Chimp 100.G2 Tourpack
- 1 Highlite Infinity Chimp Banana Fader Wing

Intelligentes Licht

- 8 Moving Head Martin MAC 250 entour
- 8 Moving Head LED Showtec MX-1 LED
- 4 Multi LED BAR Showtec Wipe Out
- 2 Moving Head Showtec Moving P64
- 2 Moving Wash Stage Line Wash 250
- 7 Moving Head Stage Line Twist 252
- 6 Moving Head LED Varitec Herowash 712Z F

PAR / ACL

- 4 6 BARS PAR 64 CP61 (Stage Truss)
- 3 4 BARS ACL PAR36
- 2 4 BARS ACL PAR64
- 8 Floorspots PAR64
- 6 PAR 64 CP62 (Front Truss)
- 6 Fresnel 650W (Room Truss)

LED

- 5 Par 64 LED Front 1:R 2:G 3:B 4:W
- 8 Plates LED RGBW 1:R 2:G 3:B
- 22 Stripes LED RGB 1m 1:R 2:G 3:B
- 8 LED PAR 16 Fun Generation

Hazer / Nebel

- 2 Hazer Tor Hazer MK2
- 2 Nebel Dragon 2000
- 4 Nebel CO2 ADJ Fury Jet

Specials

- 4 Multirays 4 Fach 800W
- 1 Colorstrobe 1:SP 2:D 3:Blind 4:Col
- 4 Audience 4 Blinder
- 4 2 Blinder 1: Dim 2:Dim
- 16 5 Blind Halogen 1m 5 x 35 W

Licht Bühne Fixtures

Moving Head

Martin Mac 250 entour
18 Ch. ext. 250 HMI

- 1 Shutter / Strobe
- 2 Dimmer
- 3 Dimmer fine
- 4 Color
- 5 Color fine
- 6 Gobo
- 7 Gobo Rotaiton
- 8 Gobo Rotaiton fine
- 9 Gobo 2
- 10 Focus
- 11 Focus Fine
- 12 Prisma
- 13/14 Pan / Pan Fine
- 15/16 Tilt / Tilt Fine
- 17 P/T Speed
- 18 Effects

Moving LED

Showtec X1-1RGBW
16 Ch. Mode

- 1 Pan
- 2 Pan Fine
- 3 Tilt
- 4 Tilt Fine
- 5 P/T Speed
- 6 P/T Makros
- 7 P/T Makros Speed
- 8 Kanalfunktionen
- 9 Dimmer
- 10 Shutter / Strobe
- 11 R
- 12 G
- 13 B
- 14 W
- 15 Farbprogramme
- 16 Farbprogramme Speed

Wipe Out

Showtec Wipe Out
41 CH. Mode

- 1 Left Tilt
- 2 Left Fine
- 3 Right Tilt
- 4 Right Fine
- 5 L&R Fine
- 6 Master Dimm
- 7 Auto Prog
- 8 LED Speed
- 9 Shutter Strobe
- 10 R 1
- 11 G 1
- 12 B 1
- 13 W 1
- ...
- 41 W 8

Moving PAR

Showtec
Moving PAR 64 (1KW CP60)

- 1 Dimmer
- 2 Strobe
- 3 Pan
- 4 Tilt
- 5 Pan Speed
- 6 Tilt Speed

Moving Wash

IMG Stage Line
Wash 250 250 HMI

- 1 Pan
- 2 Tilt
- 3 Pan / Tilt Speed
- 4 Dimmer
- 5 Shutter
- 6 Color (9 Colors)
- 7 Not used
- 8 CMY Mix
- 9 C
- 10 M
- 11 Y
- 12 CMC Speed
- 13 Frost
- 14 DMX / Automatic
- 15 Automatic Effects
- 16 Reset 2

Moving Head

IMG Stage Line Twist 252
Twist 252 250 HMI

- 1 Pan
- 2 Tilt
- 3 Pan / Tilt Speed
- 4 Dimmer
- 5 Shutter
- 6 Color (9 Colors)
- 7 Not used
- 8 CMY Mix
- 9 C
- 10 M
- 11 Y
- 12 CMC Speed
- 13 Frost
- 14 DMX / Automatic
- 15 Automatic Effects
- 16 Reset 2

Led Wash

Varitec Herowash
712 Z RGBW Zoom

- 1 Pan
- 2 Pan fine
- 3 Tilt
- 4 Tilt fine
- 5 P/T Speed
- 6 Dimmer
- 7 Strobe
- 8 R
- 9 G
- 10 B
- 11 W
- 12 Farbtemperatur
- 13 Colormakros
- 14 Zoom
- 15 Automatik

LED

Fun Generation
LED Pot 12x1W RGBW

- 1 Dimmer
- 2 3 4 R G B
- 5 W
- 6 Strobe

Licht Raum / Multimedia

Steuerungen

- 1 Highlite Infinity Chimp 100.G2 Tourpack
- 1 Highlite Infinity Chimp Banana Fader Wing

PAR / Blinder

- 12 PAR 56 Bar CP61
- 12 Halogen Blinder 5 x 35W
- 16 PAR 56 Room CP61

LED

- 10 Par 64 LED Decke
- 4 4 LED 1:R 2:G 3:B
- 7 PAR 64 LED Deko 1:R 2:G 3:B 4:W
- 4 PAR 64 Truss Light 1:R 2:G 3:B 4:Dim
- 80 LED Stripe Deko 1:R 2:G 3:B

Specials

- 6 Par 36 Schwenker 90 Grad
- 1 Par 36 Kugel 1m 36*36W
- 1 LED Cube 1m3 RGB
- 12 Spiegelkugel Div. Größen
- 8 Multirays 800W
- 10 UV 58W

Multimedia

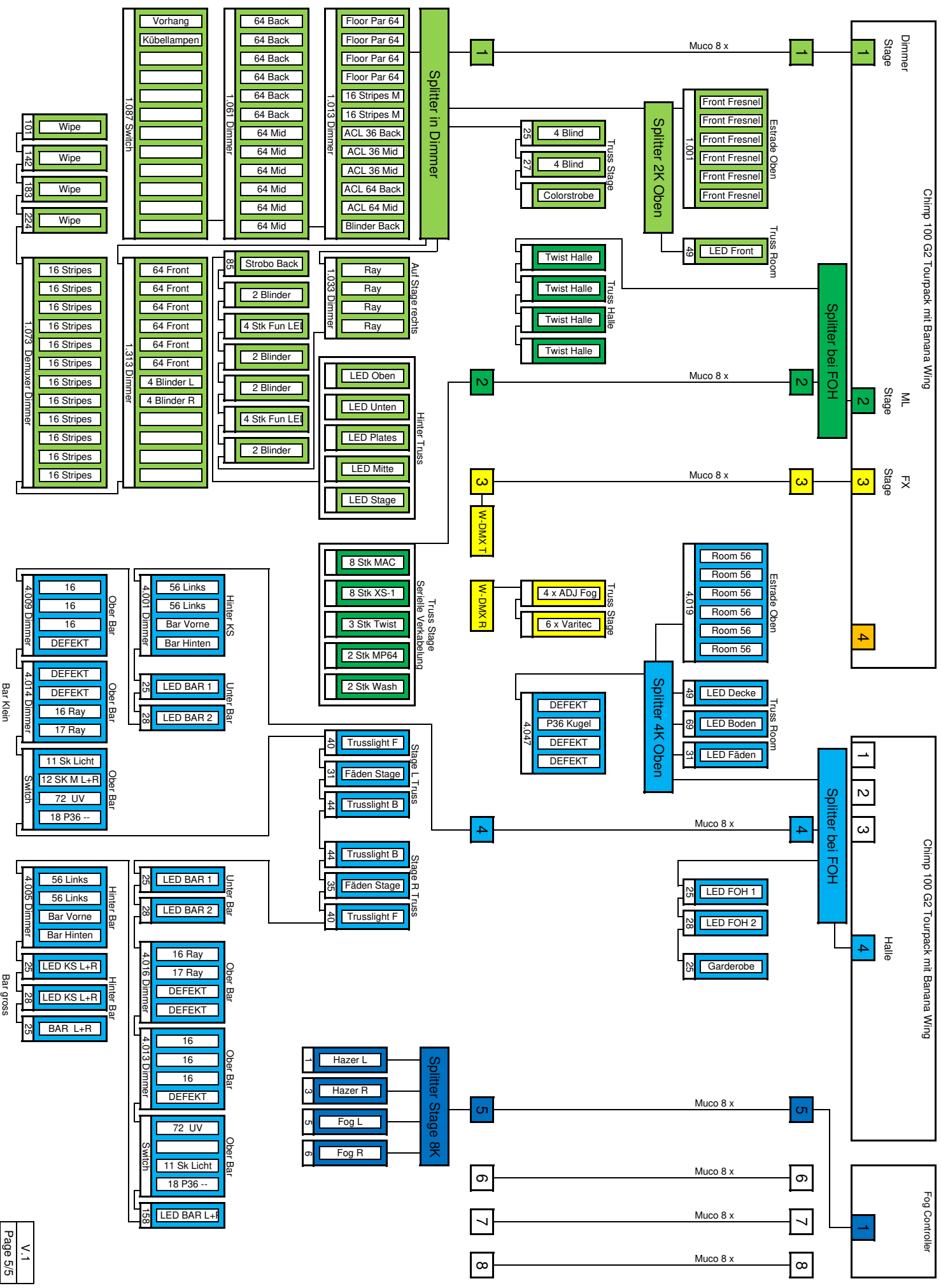
- 2 Beamer Acer 4200 Ansi HDMI/VGA
- 1 Leinwand 2.5*2m el. Truss Mitte
- 1 Leinwand 2.5*2m el. Aussen
- 1 Leinwand rund 1.5m D Truss Hinten
- 5 TV Geräte Oberhalb der Bars
- 2 Beamer LED Oberhalb der Stage

DMX FOH-Stage

- DMX Linie 1 Licht Bühne
- DMX Linie 2 Movings Bühne
- DMX Linie 3 FX Bühne
- DMX Linie 4
- DMX Linie 5 Licht Bar / Halle
- DMX Linie 6 Hazer / Fog
- DMX Linie 7
- DMX Linie 8

Wir haben keine Möglichkeit für Backdrops

Alle Bandlogos etc. können im hinteren Trusskreis projiziert werden.



Chimp 100 G2 Tourpack mit Banana Wing

Chimp 100 G2 Tourpack mit Banana Wing

Fog Controller